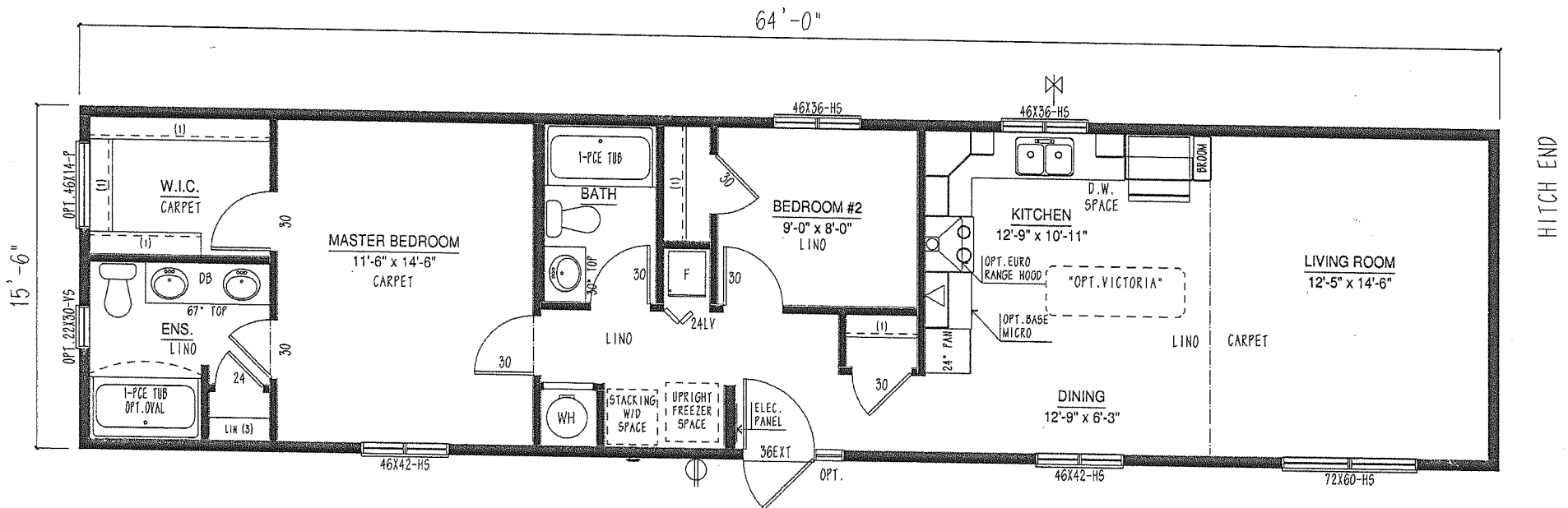


BC1664-305-C-1

- 1024 sqft.
- 2 Bedroom
- 2 Bathroom



THE SHUSWAP

Triple M Housing Ltd. reserves the right to modify plans and/or specifications at any time without notice. Due to provincial and/or other design requirements some variance in standard features may occur. Some items shown may be optional.

 **Triple M Housing**
www.triplehousing.com

3501 Giffen Road North,
Lethbridge, Alberta T1H 0E8
Tel: 403.320.8588 Fax: 403.320.9004