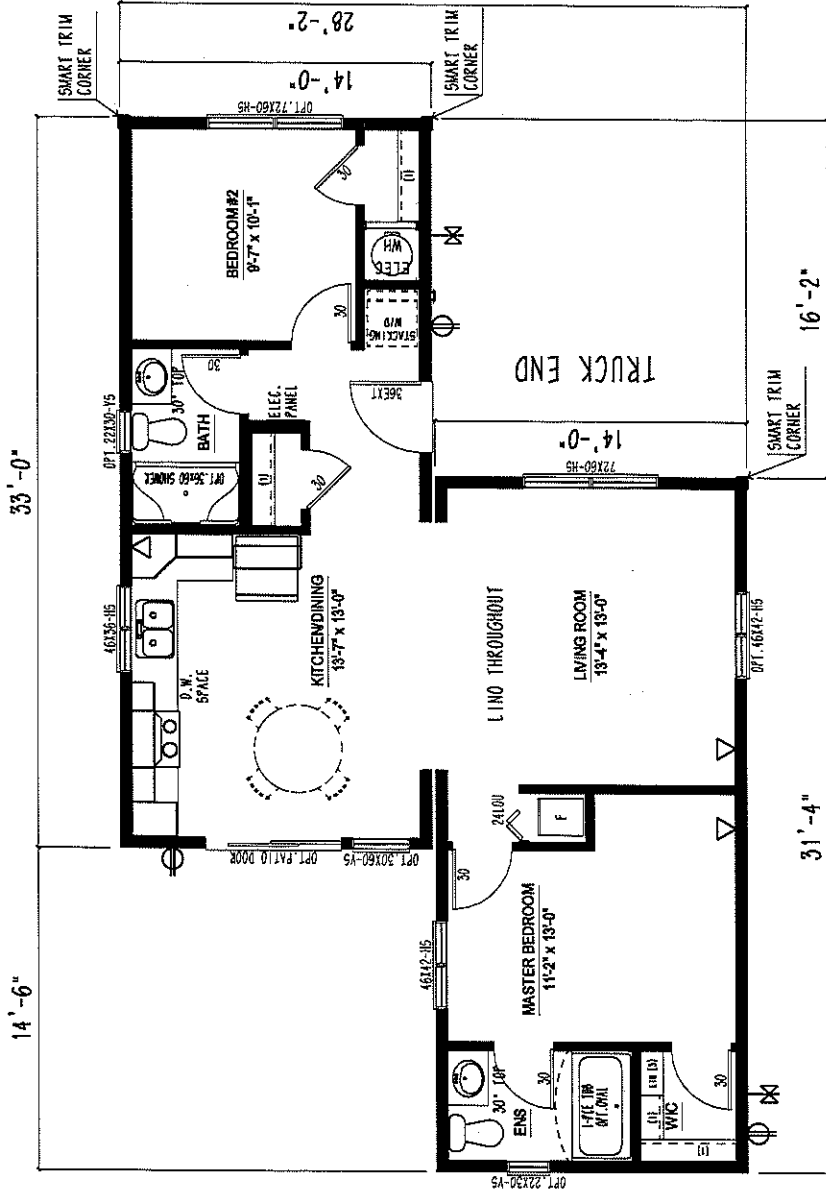


THIS DRAWING AND DESIGN IS COPYRIGHT PROTECTED AND SHALL NOT BE REPRODUCED IN WHOLE OR IN PART WITHOUT PRIOR WRITTEN AUTHORIZATION OF TRIPLE M HOUSING LTD.



THERE ARE LINO TO LINO JOINTS BETWEEN MODULES, PLEASE NOTE LINO PATTERNS WILL NOT MATCH.
 TRIPLE M WILL INSTALL ALL LINO AT FACTORY UNLESS OTHERWISE NOTED BY RETAILER AND/OR CUSTOMER ON THE ORDER FORM.

⊕	EXTERIOR G.F.I.
⊖	FROST FREE TAP
▷	TV/PHONE JACK

• REVIEW SIGNATURE & DATE •

DEALER: HALSTON HOMES	CUSTOMER: SHOW HOME
SALESPERSON: NICK KUSHNIRUK	DESTINATION: KAMLOOPS, B.C.

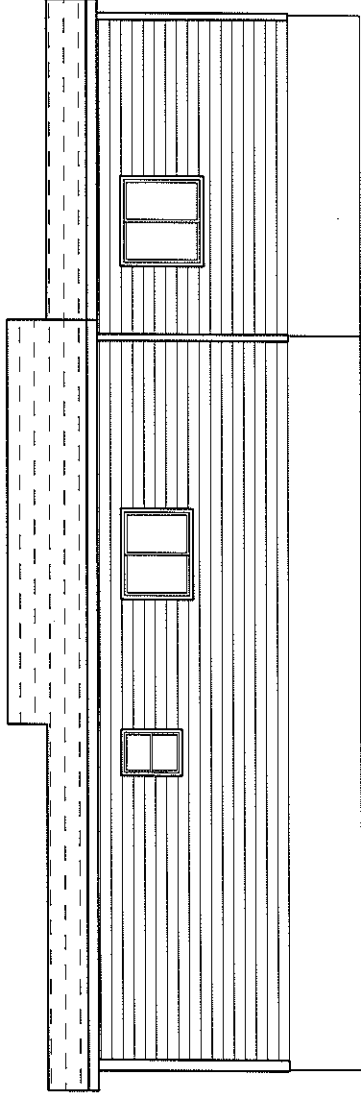
• APPROVAL SIGNATURE & DATE •

DWG.#1:	2018-06-15	LETTING AS CORNER	9471
DWG.#2:		BC1466-224-CRD-1	
DWG.#3:			
DWG.#4:			

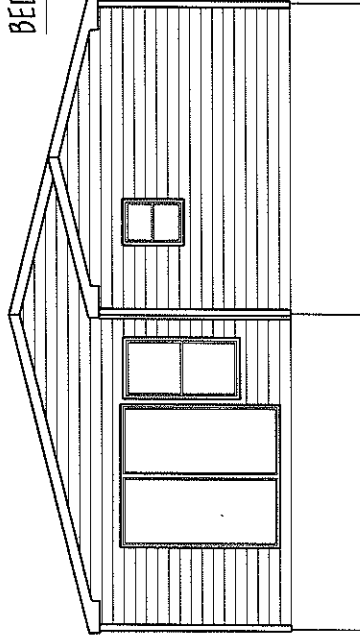
© COPYRIGHT RESERVED



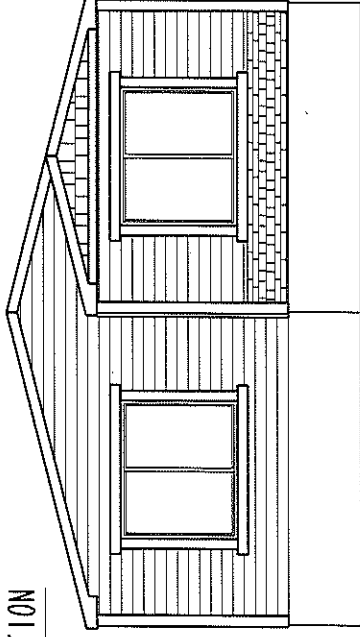
PROPOSAL DRAWING



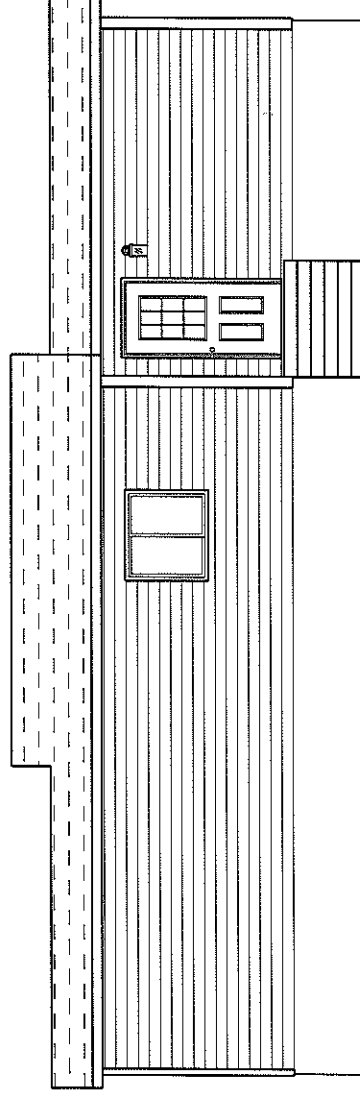
BED #2-BATH-KIT/DR-MBR ELEVATION



KIT/DR-ENSUITE ELEVATION



LIVING ROOM-BED#2 ELEVATION



MBR-LIVING ROOM-ENTRY ELEVATION

NOTE:
 1. THESE DRAWINGS INDICATE TYPICAL CONSTRUCTION ONLY (PLANS AND SPECIFICATIONS SUBJECT TO CHANGE)
 2. SOME ITEMS SHOWN ARE OPTIONAL OR SUPPLIED AND INSTALLED BY OTHERS

PROJECT NO.	BC1466-224-CRD-1
DATE	1/4/21-21
SCALE	1/4"=1'-0"
REVISED	NO. 1-9
BY	TV-2086-1B
DATE	

ENTERED AS CANON
 361-405-8888
 www.triplemhousing.com
Triple M Housing

REVISION	
NO.	
DATE	

9471